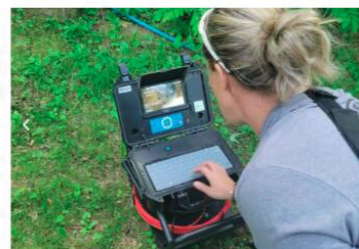




Portable video inspection system.
Comprehensive. Convenient. Reliable.



We support our customers and their businesses with durable and cost-effective equipment!



3499FB

HD Monitor

- Pixel :1920×1080
- Power Supply: DC 12V
- 10.1" LCD Monitor



1080P FULL HD

Wireless Keyboard

- It comes with a Wireless Keyboard and Receiver



Control box

- Built-in DVR
- SD Card (Max.64GB)
- Case Size:38×26×15 cm



HD Camera Head

- Head:Φ23 (Φ14/38mm)
- Self-leveling (Option)
- 512Hz sonde (Option)
- 9pcs Highlight White LEDs
- Pixel :1920(H)x1080(V) (23mm



Camera Protector

- Diameter:Φ40mm
- Diameter:Φ80mm



You can get any spare parts or guides from us

Cable Wheel

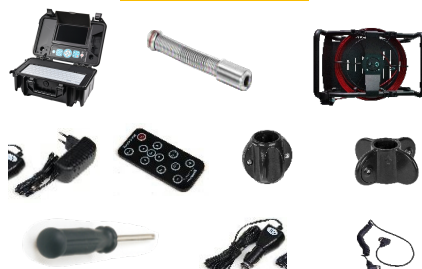
- Material : Fiberglass Cable
- Cable Length: 20/30/40M
- Cable Diameter: Φ6.8/5.2/4.8mm
- Meter counter



Battery Supply

- Battery Capacity: 7.2V 6400mAh
- Power Output: 6-12V DC, USB 5V

Parts for a kit



4488FHPT

AHD Monitor

- Pixel :1280X720
- Power Supply: DC 12V
- 13" LCD Monitor



Reliable & Durable

Control Box Panel

- 360° Rotating Camera Button
- DVR Control
- LED Indicator
- Adapter Input
- Text enter



ABS Suit Case

- Built-in DVR With USB Port
- Case Size:43×33×14cm



Rotating Camera

- Head: 33 x 72mm
- Pan 360°, Tilt 180°
- 4pcs Highlight White LEDs
- View range 120°



Optional Camera Head

- Camera head:Φ50 x154mm
- Camera head:Φ23mm
- Pixel : 1920(H)x1080(V)
- Built-in 512hz sonde



Pushrod Cable Reel

- Material : Fiberglass Cable
- Cable Diameter: Φ7mm
- Meter Counter:
Digital Footage/Meter Counter
- Reel:Stainless Steel Wheel
- Cable Length: 20/30/40M Length
- Wheel Diameter: 35 x 9cm



Battery+ Skids

- 7000mAh rechargeable Li-ion Battery
- Dia.65mm
- Dia.105mm



4388FHPT

HD Monitor

- 8" HD IPS LCD Color Display
- 1920x1080 Resolution
- On-screen Footage Counter
- Image / Video / Audio Capture



High Image Quality with PT Camera

HD 360° Rotating Camera

- 33mm(1.3") Diameter
- Manual Focus Function
- Rotation: Pan: 360°, Tilt: 180°
- Extra-Bright LED Illumination
- Waterproof IP68



HD Optional Camera Head

- Camera head: Φ23mm
- Self Leveling Function
- Pixel : 1920(H)x1080(V)
- Built-in 512hz sonde



Cable Drum

- Material: Fiberglass cable
- Cable Diameter: Φ7mm
- Meter Counter:
Digital Footage/Meter Counter
- Cable length: 20m/30m/40m
- Reel Stopper
- Wheel Diameter: 35x9cm



Battery+ Skids

- Built in 7000mA li-ion battery inside
- Dia.105mm
- Dia.65mm



3499FB-Dual

HD Monitor

- Pixel :1024×600
- Power Supply: DC 12V
- 10.1" LCD Monitor



Wireless Keyboard

- It comes with a Wireless Keyboard and Receiver



Control box

- Built-in DVR
- SD Card (Max.64GB)
- Case Size:38×26×15 cm



HD Camera Head

- Head:Φ23/Φ14/Φ18/Φ38mm
- Self-leveling (Option)
- 512Hz sonde (Option)
- Pixel : 1920(H)x1080(V)



Camera Protector

- Diameter:Φ40mm
- Diameter:Φ80mm
- Diameter:Φ28mm



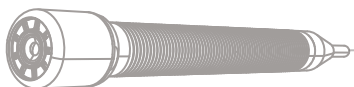
Cable Wheel

- Material : Fiberglass Cable
- Cable Length: 20/30/40M
- Cable Diameter: Φ6.8/5.2/4.8mm
- Meter counter



Battery Supply

- Battery Capacity: 7.2V 6400mAh
- Power Output: 6-12V DC, USB 5V



You can get any spare parts or guides from us

Parts for a kit



8188FH

HD Monitor

- Pixel : 1280×800(8" monitor)
- Power Supply:DC 5V
- 8" LCD Monitor
- APP View By Wifi Router



FULL HD



- Control Box Rotation range:
Vertical : 0°~130°

HD Camera C23H

- Camera Housing:Φ23mm
- 9pcs Highlight White LEDs
- Pixel : 1920(H)×1080(V)



Camera Protector

- External dimensions:
44*44*46(mm)
- Inner diameter:Φ23mm



Pushrod Cable Reel

- Material:Fiberglass Cable
- Cable Diameter: Φ5.5mm
- Meter Counter:
Photoelectric Counter
- Reel:Stainless Steel Wheel
- Cable Length: Standard=30M,Max=40M Length
- Wheel Diameter:402×352×228mm



Optional Features

Self-leveling function
Built-in 512hz sonde
13.5mm camera head
Φ4.8mm cable

Battery+Charger

- Adapter:
AC: 110V~240V
DC: 12.9 V 3A
- Polymer lithium battery:12V 8000MAH
- Battery Level Display-charge Indicate



8888FH

Reliable & Durable

HD Monitor

- 8" HD IPS LCD Color Display
- 1920x1080 Resolution
- On-screen Footage Counter
- Image / Video / Audio Capture



HD Camera Head

- 20 x 26.5mm Diameter
- View range 90°
- 6pcs high light LED
- Waterproof IP68
- Pixel : 1920(H)x1080(V)
- Built-in 512hz sonde (Option)
- Detachable with pins type connection to Cable Reel



HD Optional Camera Head

- Camera head: Φ23mm
- Self Leveling Function
- Pixel : 1920(H)x1080(V)
- Built-in 512hz sonde (Option)



Cable Drum

- Material: Fiberglass cable
- Cable Diameter: Φ6mm
- Cable Diameter: Φ5.2mm (stiffer)
- Digital Footage/Meter Counter
- Cable length: 20m/30m
- Wheel Diameter: 31x6.3cm



Battery+ Skids

- Built in 6800mA li-ion battery inside
- Dia.30mm
- Dia.50mm



8388FHPT

AHD Monitor

- Pixel :1024X600
- Power Supply: DC 12V
- 10" LCD Monitor

Reliable & Durable

Control Box Panel

- 360° Rotating Camera Button
- Built-in DVR With USB Port
- LED Indicator
- Adapter Input
- Text enter
- 32.7×22.7×15.0 cm

Rotating Camera

- Head: 28mm
- Pan 360°, Tilt 180°
- 2pcs Highlight White LEDs
- View range 120°

Optional Camera Head

- Camera head:Φ23mm
- Camera head:Φ40mm
- Pixel : 1920(H)x1080(V)
- Built-in 512hz sonde

Pushrod Cable Reel

- Material : Fiberglass Cable
- Cable Diameter: Φ7/8mm
- Meter Counter:
Digital Footage/Meter Counter
- Reel:Stainless Steel Wheel
- Cable Length: 30/40/60M Length
- Wheel Diameter:
410×w245x320mm

Battery+ Skids

- 6600mAh rechargeable Li-ion Battery
- Dia.65mm
- Dia.105mm

4588FHPT

AHD Monitor

- Pixel :1280X720
- Power Supply: DC 12V
- 13" LCD Monitor



Reliable & Durable

Control Box Panel

- 360° Rotating Camera Button
- DVR Control
- LED Indicator
- Adapter Input
- Text enter



ABS Suit Case

- Built-in DVR With USB Port
- Case Size:43×33×14cm



Rotating Camera

- Head: 50mm x 154mm
- Pan 360°, Tilt 180°
- 4pcs Highlight White LEDs
- View range 120°



Optional Camera Head

- Camera head:Φ33mm
- Pixel : 1920(H)x1080(V)
- Built-in 512hz sonde



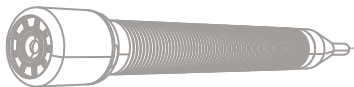
Pushrod Cable Reel

- Material : Fiberglass Cable
- Cable Diameter: Φ7mm
- Meter Counter:
Digital Footage/Meter Counter
- Reel:Stainless Steel Wheel
- Cable Length: 60M Length
- Wheel Diameter: 51 x 25 x 64cm



Battery+ Skids

- 8800mAh rechargeable Li-ion Battery
- Dia.145mm
- Dia.185mm
- Dia.200 to 450mm (Option)



3399FB

HD Monitor

- Pixel :1024×600
- Power Supply: DC 12V
- 10.1" LCD Monitor



Reliable & Durable

Wireless Keyboard

- It comes with a Wireless Keyboard and Receiver



Control box

- Built-in DVR
- SD Card (Max.64GB)
- Case Size:38×26×15 cm



HD Camera Head

- Head:Φ38/Φ23mm
- Self-leveling
- 512Hz sonde (Option)
- 12cs Highlight White LEDS



Camera Protector

- Diameter:Φ78mm •
- Diameter:Φ 134mm



Caster skid



POM skid



Ball support



Lock sleeve

You can get any spare parts or guides from us

Cable Wheel

- Material : Fiberglass Cable
- Cable Length: 40/50/60M
- Cable Diameter: Φ6.8mm
- Meter counter



Battery Supply

- Battery Capacity: 7.2V 5200mAh
- Power Output: 6-12V DC, USB 5V

Parts for a kit



4688FHPT

AHD Monitor

- Pixel :1280X720
- Power Supply: DC 12V
- 13" LCD Monitor



Reliable & Durable

Control Box Panel

- 360° Rotating Camera Button
- DVR Control
- LED Indicator
- Adapter Input
- Text enter



ABS Suit Case

- Built-in DVR With USB Port
- Case Size:43×33×14cm



Rotating Camera

- Head: 50mm x 154mm
- Pan 360°, Tilt 180°
- 4pcs Highlight White LEDs
- View range 120°



Optional Feature

- Built-in 512hz sonde



Pushrod Cable Reel

- Material : Fiberglass Cable
- Cable Diameter: Φ9mm
- Meter Counter:
Digital Footage/Meter Counter
- Reel:Stainless Steel Wheel
- Cable Length: 60-150m Length
- Wheel Diameter: 70 x 28 x 84cm



Battery+ Skids

- 8800mAh rechargeable Li-ion Battery
- Dia.145mm
- Dia.185mm
- Dia.200 to 450mm (Option)



8588FHPT

HD Monitor

- Pixel :1920×1080 (10.1" monitor)
- Power Supply: DC 12V
- 10.1" LCD Monitor



FULL HD

Control Box Panel

- 360° Rotating Camera Button
- DVR Control
- LED Indicator
- MIC on/off
- Adapter Input
- Power Switch
- Text enter



ABS Suit Case

- Built-in DVR With USB Port
- Case Size:32.7×22.7×15.0 cm
- Carton Size:35.8×28.4×16.8cm
- Each Set In ABS Plastic Case



HD Camera C40H

- Camera Head:Φ40mm
- 28mm Pan Tilt head (Option)
- Self Leveling Function
- 512hz sonde Option)
- Pixel : 1920(H)x1080(V)



Camera Protector

- External dimensions:
72*72*73(mm)
- Inner diameter:Φ40mm



Pushrod Cable Reel

- Material : Fiberglass Cable
- Cable Diameter: Φ9mm
- Meter Counter: Photoelectric Counter
- Reel:Stainless Steel Wheel
- Cable Length: 60-120M Length
- Wheel Diameter:693×428x1027mm



Battery+Charger

- Adapter:
AC: 110V~240V
DC: 12.9 V 3A
- Polymer lithium battery:12V 8000MAH
- Battery Level Display-charge Indicate



8688FHPT

HD Monitor

- Pixel :1024×600
- Power Supply: DC 12V
- 10.1" LCD Monitor



FULL HD

ABS Suit Case

- DVR With USB Port
- Case Size:51.1×43×18cm
- Carton size:59×28×51.5cm
- Each Set In ABS Plastic Case



HD Camera C40H

- Camera Head:Φ40mm
- Φ40mm (Option)
- Self Leveling Function
- 512hz sonde Option)
- 9PCS Highlight White LEDS •
- Pixel : 1920(H)x1080(V)



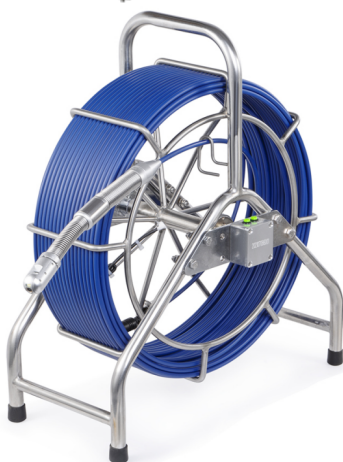
Camera Protector

- Center Protector Size
Φ90×L79 (mm)
Φ220×L79 (mm)
Φ140×L79 (mm)
- Skid With Wheel:
115mm/150mm/200mm



Pushrod Cable Reel

- Material : Fiberglass Cable
- Cable Diameter: Φ8mm
- Meter Counter: Photoelectric Counter
- Reel:Stainless Steel Wheel
- Cable Length: 60M Length



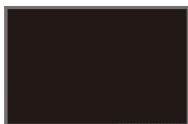
Battery+Charger

- Charger: DC 13.5V / 1700 MA
- Lithium Battery: 6600MAH
- Output: 12V DC, ≤73Wh
- Battery Level Display-charge Indicate

8788FHPT

HD Monitor

- Pixel :1024×600
- Power Supply: DC 12V
- 10.1" LCD Monitor



FULL HD

ABS Suit Case

- DVR With USB Port
- Case Size:51.1×43×18cm
- Carton size:59×28×51.5cm
- Each Set In ABS Plastic Case



HD Camera C40H

- Camera Head:Φ40mm
- Φ40mm (Option)
- Self Leveling Function
- 512hz sonde Option)
- 9PCS Highlight White LEDS •
- Pixel : 1920(H)x1080(V)



Camera Protector

- Center Protector Size
Φ90×L79 (mm)
Φ220×L79 (mm)
Φ140×L79 (mm)
- Skid With Wheel:
115mm/150mm/200mm



Pushrod Cable Reel

- Material : Fiberglass Cable
- Cable Diameter: Φ9mm
- Meter Counter: Photoelectric Counter
- Reel:Stainless Steel Wheel
- Cable Length: 60-120M Length

Battery+Charger

- Charger: DC 13.5V / 1700 MA
- Lithium Battery: 6600MAH
- Output: 12V DC, ≤73Wh
- Battery Level Display-charge Indicate



3388PT



Industrial **Pan&Tilt** Video Drain / Pipe Inspection Camera

This is a professional video inspection camera with Φ 28mm Pan and Tilt camera head (1080P full HD 40mm head), 10" LCD monitor, Φ 8mm rod cable, 60m length, SD card or USB stick recording, etc. It's designed for inspection of sewer, pipe, air ducts, underground cable pipes, etc.



Pan & Tilt

Dia.
28mm



10" Inch LCD

Li-
battery



Record,
USB or SD

60m push
cable



Rod Dia.
8mm

Keyboard



Meter
Counter

512Hz
Sonde

Affordable, Reliable, Durable



Features

- 1/3 inch CMOS Pan and Tilt camera head, pan 360° tilt 180°
- Stainless steel camera head, IP68 waterproof level
- Sapphire glass lens cover, 2 high light white LEDs
- Diameter of camera: 28 mm
- Two plastic guides for camera head, $\Phi 50\text{mm}$ & $\Phi 90\text{mm}$
- 10" LCD color monitor
- Support USB stick/SD Card slot to store still pictures or videos
- LED brightness control buttons
- With meter counter, feet and meter adjustable
- With microphone for local audio recording
- Rechargeable battery lasts up to 4 hours
- On-Screen date and time, distance counter
- 60m fiberglass, $\Phi 8\text{mm}$ push rod
- With auto-leveling function
- With Keyboard for text input (English)
- With 512hz sonde function

Specifications

Camera head

Material	Aluminium
Camera Diameter	$\Phi 28\text{mm}$
Sensor	1/3 Inch CMOS
Camera swing angle	180°
Camera rotating angle	360°
Roller Skids	$\Phi 50\text{mm}$, $\Phi 90\text{mm}$
Camera head glass material	Sapphire glass
LEDs	2pcs high light LEDs
Waterproof	Max. 10m under water
512Hz	Yes
Auto Self-leveling	Yes

Push Cable

Cable dia	8mm
Cable Material	Fiberglass
Available length	60m
Wheel material	Stainless steel

LCD Display and DVR

LCD Resolution	1024*600 pixel
Video Compress	MPEG-4
Recording	Video and audio recording
Picture	Picture shot function
LCD Size	10 inch
Menu Language	8 Languages(English, German, French, Italian, Spanish, Portuguese, Russian,Dutch)
Panel Control	Any functions through buttons
External Memory	USB Stick/SD Card (Max. 2 5 6 GB)

Parts for a kit



1 × Control Box



1 × Remote Control



1 × spring connector



1 × Camera Head



1 × 50mm Skid



1 × Power Adapter



1 × Cable Reel



1 × 90mm skid



1 × Connection Cable(5m)



1 × User manual

3688



Industrial Video **Pan & Tilt** Drain / Pipe Inspection Camera

This is a professional video inspection camera with Φ 56mm Pan and Tilt camera head(1080P FULL HD 40mm head), 10" LCD monitor, Φ 9mm rod cable, 60-120m length, SD card or USB stick recording, etc. Its designed for inspection of sewer, pipe, air ducts, underground cable pipes, etc.

Pan & Tilt


Dia.
56mm



10" Inch LCD

Li-battery 

Record,
USB or SD

60-120m
cable 

Rod Dia.
9mm

Keyboard 

Meter
Counter

512Hz
Sonde(optional)

Φ56 Pan and Tilt camera head, pan 360° tilt 180°, with 4 high-light LEDs, focus range about 5cm ~ infinite

Meter counter, with zero-set
Feet/Meter adjustable

The system comes with 10" wide screen for clear image viewing. The easy to use sun visor helps people view image clearly when operating the system outside.

Φ9mm rod cable 60-120m optional

Replaceable stainless steel spring
Built-in 512Hz sonde (optional)

Φ56mm Pan & Tilt camera head

10" TFT LCD, with sun visor

Pan and Tilt Joystick camera leveling button

Function buttons area

Keyboard for text input

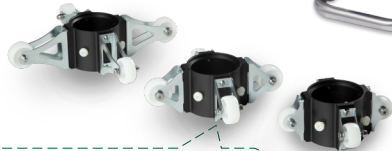
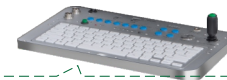
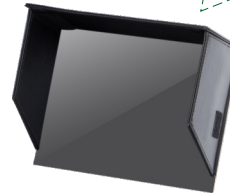
3 skids, Φ210mm, Φ156mm, Φ124mm.

Φ210mm skid

Φ156mm skid

Φ124mm skid

Control joystick with camera leveling button.
With keyboard to input text and to make simple inspection report



Features

- 1/3 inch CMOS Pan and Tilt camera head, pan 360° tilt 180°
- Stainless steel camera head, IP68 waterproof level
- Sapphire glass lens cover, 4 high light white LEDs
- Diameter of camera: 56 mm
- Three plastic guides for camera head, Φ110mm & Φ150mm & Φ200mm
- 10" LCD color monitor
- Support USB stick/SD Card slot to store still pictures or videos
- LED brightness control buttons
- With meter counter, feet and meter adjustable
- With microphone for local audio recording
- Rechargeable battery lasts up to 4 hours
- On-Screen date and time, distance counter
- 60-120m fiberglass φ9mm push rod
- Manual self-leveling function
- With Keyboard for text input (English)
- With 512hz sonde function(optional)

Specifications

Material	Aluminium
Camera Diameter	Φ56mm
Sensor	1/3 Inch CMOS PC1099
Camera swing angle	180°
Camera rotating angle	360°
Focal Distance	5cm ~ infinite
Roller Skids	Φ110mm, Φ150mm, Φ200mm
Camera head glass material	Sapphire glass
LEDs	4pcs high light LEDs
Waterproof	Max. 10m under water
	Optional

Cable dia
Cable Material
Available length
Wheel material

9mm
Fiberglass
60/80/100/120m
Stainless steel

LCD Resolution
Video Compress
Recording
Picture
LCD Size
Menu Language

1024*600 pixel
MPEG-4
Video and audio recording
Picture shot function
10 inch
8 Languages(English, German, French, Italian, Spanish, Portuguese, Russian, Dutch)
Any functions through buttons
USB Stick/SD Card (Max. 32GB)



1 × Control Box



1 × 210mm skid



1 × Remote Control



1 × Camera Head



1 × 124mm Skid



1 × Power Adapter



1 × SKIDS SCREW (12 PCS)



1 × Cable Reel



1 × 156mm skid



1 × Connection Cable(5m)

User manual

1 × User manual

3299FB

HD Monitor

- Pixel :1024×600
- Power Supply: DC 12V
- 10.1" LCD Monitor



Reliable & Durable

Wireless Keyboard

- It comes with a Wireless Keyboard and Receiver



Control box

- Built-in DVR
- SD Card (Max.64GB)
- Case Size:38×26×15 cm



HD Camera Head

- Head:Φ38
- Self-leveling
- 512Hz sonde (Option)
- 12cs Highlight White LEDs



Camera Protector

- Diameter:Φ78mm •
- Diameter:Φ 134mm



Caster skid



Ball support



POM skid



Lock sleeve

You can get any spare parts or guides from us

Cable Wheel

- Material : Fiberglass Cable •
- Cable Length: 60/80/100/120M
- Cable Diameter: Φ9mm
- Meter counter



Battery Supply

- Battery Capacity: 7.2V 5200mAh
- Power Output: 6-12V DC, USB 5V

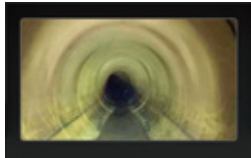
Parts for a kit



8288FH

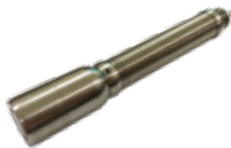
HD Monitor

- Pixel : 1920×1080(10" monitor)
- Power Supply:DC 12v
- 10" LCD Monitor



HD Camera C23H

- Camera head:Φ23mm
- 9pcs Highlight White LEDS
- Pixel : 1920(H)x1080(V)



Camera Protector

- External dimensions: 44*44*46(mm)
- Inner diameter:Φ23mm



Case

- DVR With USB Port
- Case Size:51.1×43×18cm
- Carton size:59×28×51.5cm
- Each Set In ABS Plastic Case



Optional Features:

- Self-leveling function
- Built-in 512hz sonde
- 13.5mm camera head
- Φ4.8mm cable

Fiberglass Cable

- Reel Diameter:32.5cm
- Meter Counter
- Rubber Covered Handle
- Φ5.5mm ,20/30/40M cable



Battery+Charger

- Adapter:
AC: 110V~240V
DC: 12.9 V 3A
- Polymer lithium battery:12V 8000MAH
- Battery Level Display-charge Indicate

3199F

HD Monitor

- Pixel :1024×600
- Power Supply: DC 12V
- 10.1" LCD Monitor



1080P FULL HD

Wireless Keyboard

- It comes with a Wireless Keyboard and Receiver



Control box

- Built-in DVR
- SD Card (Max.64GB)
- Case Size:55×43.5×34.5 cm



HD Camera Head

- Head:Φ23mm (Φ14/Φ38)
- Self-leveling (Option)
- 512Hz sonde (Option)
- 9pcs Highlight White LEDs
- Pixel : 1920(H)x1080(V)



Camera Protector

- Diameter:Φ40mm
- Diameter:Φ80mm



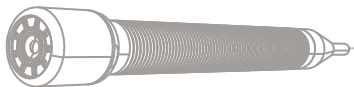
Cable Wheel

- Material : Fiberglass Cable
- Cable Length: 20/30/40M
- Cable Diameter: 5.2/4.8mm
- Meter counter



Battery Supply

- Battery Capacity: 7.2V 6400mAh
- Power Output: 6-12V DC, USB 5V



You can get any spare parts or guides from us

Parts for a kit



TPL200

Locator Multi Frequency (512Hz/640Hz/33kHz)

This is a Locator featuring frequencies of 512Hz/640Hz/33kHz, specifically designed for locating buried pipes and cables. This tool aids in locating and tracing the paths of buried power cables, drains, ducts, pipes, sewer lines, and telephone cables. The locator can be used independently or in conjunction with a camera sonde or transmitter.

Please note: The Locator is not intended for use as a Metal Detector.

NEW



Distance:
10 meters (open area)



Frequencies:
512Hz/640Hz/33kHz



Power Line Locate:
50/60Hz



Radio Frequencies:
6KHz-22KHz



Signal Level:
0~100



Ingress Protection:
IP65



Working time:
10 hours





The toughest tools down the line



ETVCameras CO.,LTD

1F, Yifutong Industrial Zone, Huangmabu Community, Lezhujiao Village,
Hangcheng Street, Bao'an District, Shenzhen, China

For more product information, please visit our website:

WWW.EtvCameras.com

Tel: +86 13267135215

sales@etvcameras.com

