

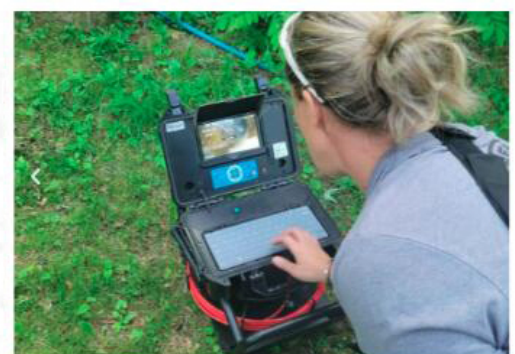


Portable video inspection system.

Comprehensive. Convenient. Reliable.



We support our customers and their businesses with durable and cost-effective equipment!



3499FB

HD Monitor

- Pixel :1920×1080
- Power Supply: DC 12V
- 10.1" LCD Monitor



1080P FULL HD

Wireless Keyboard

- It comes with a Wireless Keyboard and Receiver



Control box

- Built-in DVR
- SD Card (Max.64GB)
- Case Size:38×26×15 cm



HD Camera Head

- Head:Φ23 (Φ14/18/38mm)
- Self-leveling (Option)
- 512Hz sonde (Option)
- 9pcs Highlight White LEDs
- Pixel :1920(H)x1080(V) (23mm)



Camera Protector

- Diameter:Φ40mm
- Diameter:Φ80mm



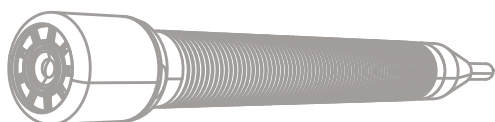
Cable Wheel

- Material : Fiberglass Cable
- Cable Length: 20/30/40M
- Cable Diameter: Φ6.8/5.2/4.8mm
- Meter counter



Battery Supply

- Battery Capacity: 7.2V 6400mAh
- Power Output: 6-12V DC, USB 5V



Parts for a kit



WIFI8888

Wi-Fi HD inspection camera

- Image Resolution: 720P
- Wi-Fi Transmits up to 80 /20m
- App for Viewing and Recording
- Video & Audio Recording / Still Pictures
- Pinch Zoom and Focus Feature
- Works with Android and Apple Devices
- Connect to Multiple Smart Devices at Same Time



Reliable & Durable

Camera Head

- Head: $\Phi 28\text{mm} \times 41.2\text{mm}$
- Self-leveling
- 512Hz sonde
- Waterproof according to IP 67
- 1 2 pcs Highlight White LEDS



Camera Protector

- Diameter: $\Phi 40$
- Diameter: $\Phi 80\text{mm}$

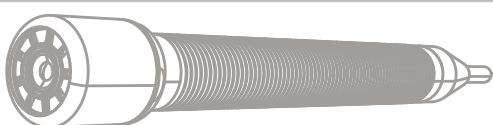


Cable Wheel

- Material : Fiberglass Cable
- Cable Length: 30M /100FT
- Cable Diameter: $\Phi 5.2\text{mm}$
- Meter counter
- Product Dimensions 500mmX396mmX132mm



Parts for a kit



4488FHPT

AHD Monitor

- Pixel :1280X720
- Power Supply: DC 12V
- 13" LCD Monitor



Reliable & Durable

Control Box Panel

- 360° Rotating Camera Button
- DVR Control
- LED Indicator
- Adapter Input
- Text enter



ABS Suit Case

- Built-in DVR With USB Port
- Case Size:43×33×14cm



Rotating Camera

- Head: 33 x 72mm
- Pan 360°, Tilt 180°
- 4pcs Highlight White LEDs
- View range 120°



Optional Camera Head

- Camera head:Φ50 x154mm
- Camera head:Φ23mm
- Pixel : 1920(H)x1080(V)
- Built-in 512hz sonde



Pushrod Cable Reel

- Material : Fiberglass Cable
- Cable Diameter: Φ7mm
- Black stiffer cable (Option)
- Meter Counter: Digital Footage
- Reel:Stainless Steel Wheel
- Cable Length: 20/30/40M Length
- Wheel Diameter: 35 x 9cm



Battery+ Skids

- 8800mAh rechargeable Li-ion Battery
- Dia.65mm
- Dia.105mm



4388FHPT

HD Monitor

- 8" HD IPS LCD Color Display
- 1920x1080 Resolution
- On-screen Footage Counter
- Image / Video / Audio Capture



High Image Quality with PT Camera

HD 360° Rotating Camera

- 33mm(1.3") Diameter
- Manual Focus Function
- Rotation: Pan: 360°, Tilt: 180°
- Extra-Bright LED Illumination
- Waterproof IP68



HD Optional Camera Head

- Camera head: Φ23mm
- Self Leveling Function
- Pixel : 1920(H)x1080(V)
- Built-in 512hz sonde



Cable Drum

- Material: Fiberglass cable
- Cable Diameter: Φ7mm
- Meter Counter: Digital Footage
- Cable length: 20m/30m/40m
- Reel Stopper
- Wheel Diameter: 35x9cm



Battery+ Skids

- Built in 7000mA li-ion battery inside
- Dia.105mm
- Dia.65mm



3499FB-Dual

HD Monitor

- Pixel :1024×600
- Power Supply: DC 12V
- 10.1" LCD Monitor



Wireless Keyboard

- It comes with a Wireless Keyboard and Receiver



Control box

- Built-in DVR
- SD Card (Max.64GB)
- Case Size:38×26×15 cm



HD Camera Head

- Head:Φ23/Φ14/Φ18/Φ38mm
- Self-leveling (Option)
- 512Hz sonde (Option)
- Pixel : 1920(H)x1080(V)



Camera Protector

- Diameter:Φ40mm
- Diameter:Φ80mm
- Diameter:Φ28mm



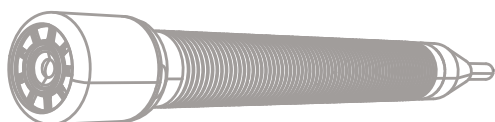
Cable Wheel

- Material : Fiberglass Cable
- Cable Length: 20/30/40M
- Cable Diameter: Φ6.8/5.2/4.8mm
- Meter counter



Battery Supply

- Battery Capacity: 7.2V 6400mAh
- Power Output: 6-12V DC, USB 5V



You can get any spare parts or guides from us

Parts for a kit



8888FH

Reliable & Durable

HD Monitor

- 8" HD IPS LCD Color Display
- 1920x1080 Resolution
- On-screen Footage Counter
- Image / Video / Audio Capture



HD Camera Head

- 20 x 26.5mm Diameter
- View range 90°
- 6pcs high light LED
- Waterproof IP68
- Pixel : 1920(H)x1080(V)
- Built-in 512hz sonde (Option)
- Detachable with pins type connection to Cable Reel



HD Optional Camera Head

- Camera head: Φ23mm
- Pan Tilt 33mm head
- Pixel : 1920(H)x1080(V)
- Built-in 512hz sonde (Option)



Cable Drum

- Material: Fiberglass cable
- Cable Diameter: Φ6mm
- Cable Diameter: Φ5.2mm (stiffer)
- Digital Footage
- Cable length: 20m/30m
- Wheel Diameter: 31x6.3cm



Battery+ Skids

- Built in 6800mA li-ion battery inside
- Dia.30mm
- Dia.50mm



4588FHPT

AHD Monitor

- Pixel :1280X720
- Power Supply: DC 12V
- 13" LCD Monitor



Reliable & Durable

Control Box Panel

- 360° Rotating Camera Button
- DVR Control
- LED Indicator
- Adapter Input
- Text enter



ABS Suit Case

- Built-in DVR With USB Port
- Case Size:43×33×14cm



Rotating Camera

- Head: 50mm x 154mm
- Pan 360°, Tilt 180°
- 4pcs Highlight White LEDs
- View range 120°



Optional Camera Head

- Camera head:Φ33mm
- Pixel : 1920(H)x1080(V)
- Built-in 512hz sonde



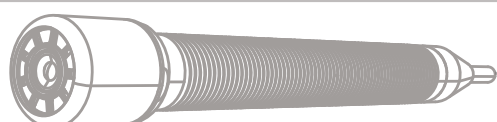
Pushrod Cable Reel

- Material : Fiberglass Cable
- Cable Diameter: Φ7mm
- Meter Counter: Digital Footage
- Reel:Stainless Steel Wheel
- Cable Length: 60M Length
- Wheel Diameter: 51 x 25 x 64cm



Battery+ Skids

- 8800mAh rechargeable Li-ion Battery
- Dia.145mm
- Dia.185mm
- Dia.200 to 450mm (Option)



3399FB

HD Monitor

- Pixel :1024×600
- Power Supply: DC 12V
- 10.1" LCD Monitor



Reliable & Durable

Wireless Keyboard

- It comes with a Wireless Keyboard and Receiver



Control box

- Built-in DVR
- SD Card (Max.64GB)
- Case Size:38×26×15 cm



HD Camera Head

- Head:Φ38/Φ23mm
- Self-leveling
- 512Hz sonde (Option)
- 12cs Highlight White LEDS



Camera Protector

- Diameter:Φ78mm •
- Diameter:Φ 134mm



Cable Wheel

- Material : Fiberglass Cable
- Cable Length: 40/50/60M
- Cable Diameter: Φ6.8mm
- Meter counter



Battery Supply

- Battery Capacity: 7.2V 5200mAh
- Power Output: 6-12V DC, USB 5V

Parts for a kit



4688FHPT

AHD Monitor

- Pixel :1280X720
- Power Supply: DC 12V
- 13" LCD Monitor



Reliable & Durable

Control Box Panel

- 360° Rotating Camera Button
- DVR Control
- LED Indicator
- Adapter Input
- Text enter



ABS Suit Case

- Built-in DVR With USB Port
- Case Size:43×33×14cm



Rotating Camera

- Head: 50mm x 154mm
- Pan 360°, Tilt 180°
- 4pcs Highlight White LEDs
- View range 120°



Optional Feature

- Built-in 512hz sonde
- 33mm Pan Tily head



Pushrod Cable Reel

- Material : Fiberglass Cable
- Cable Diameter: Φ9mm
- Meter Counter:
Digital Footage/Meter Counter
- Reel:Stainless Steel Wheel
- Cable Length: 60-150m Length
- Wheel Diameter: 70 x 28 x 84cm



Battery+ Skids

- 8800mAh rechargeable Li-ion Battery
- Dia.145mm
- Dia.185mm
- Dia.200 to 450mm (Option)



8588FHPT

HD Monitor

- Pixel :1920×1080 (10.1" monitor)
- Power Supply: DC 12V
- 10.1" LCD Monitor



FULL HD

Control Box Panel

- 360° Rotating Camera Button
- DVR Control
- LED Indicator
- MIC on/off
- Adapter Input
- Power Switch
- Text enter



ABS Suit Case

- Built-in DVR With USB Port
- Case Size:32.7×22.7×15.0 cm
- Carton Size:35.8×28.4×16.8cm
- Each Set In ABS Plastic Case



HD Camera C40H

- Camera Head:Φ40mm
- 28mm Pan Tilt head (Option)
- 56mm Pan Tilt head (Option)
- Self Leveling Function
- 512hz sonde Option)
- Pixel : 1920(H)x1080(V)

Camera Protector

- External dimensions: 72*72*73(mm)
- Inner diameter:Φ40mm



Pushrod Cable Reel

- Material : Fiberglass Cable
- Cable Diameter: Φ9mm
- Meter Counter: Photoelectric Counter
- Reel:Stainless Steel Wheel
- Cable Length: 60-120M Length
- Wheel Diameter:693×428x1027mm



Battery+Charger

- Adapter:
AC: 110V~240V
DC: 12.9 V 3A
- Polymer lithium battery:12V 8000MAH
- Battery Level Display-charge Indicate



3388PT



Industrial **Pan&Tilt** Video Drain / Pipe Inspection Camera

This is a professional video inspection camera with Φ 28mm Pan and Tilt camera head, 10" LCD monitor, Φ 8mm rod cable, 60m length, SD card or USB stick recording, etc. It's designed for inspection of sewer, pipe, air ducts, underground cable pipes, etc.



Pan & Tilt

Dia.
28mm



10" Inch LCD

Li-
battery



Record,
USB or SD

60m push
cable



Rod Dia.
8mm

Keyboard



Meter
Counter

512Hz
Sonde

3688



Industrial Video **Pan & Tilt** Drain / Pipe Inspection Camera

This is a professional video inspection camera with Φ 56mm Pan and Tilt camera head(1080P FULL HD 40mm head), 10" LCD monitor, Φ 9mm rod cable, 60-120m length, SD card or USB stick recording, etc. Its designed for inspection of sewer, pipe, air ducts, underground cable pipes, etc.

Pan & Tilt

Dia.
56mm



10" Inch LCD

Li-battery



Record,
USB or SD

60-120m
cable



Rod Dia.
9mm

Keyboard



Meter
Counter

512Hz
Sonde(optional)

3299FB

HD Monitor

- Pixel :1024×600
- Power Supply: DC 12V
- 10.1" LCD Monitor



Reliable & Durable

Wireless Keyboard

- It comes with a Wireless Keyboard and Receiver



Control box

- Built-in DVR
- SD Card (Max.64GB)
- Case Size:38×26×15 cm



HD Camera Head

- Head:Φ38
- Self-leveling
- 512Hz sonde (Option)
- 12cs Highlight White LEDS



Camera Protector

- Diameter:Φ78mm •
- Diameter:Φ 134mm



Cable Wheel

- Material : Fiberglass Cable •
- Cable Length: 60/80/100/120M
- Cable Diameter: Φ9mm
- Meter counter



Battery Supply

- Battery Capacity: 7.2V 5200mAh
- Power Output: 6-12V DC, USB 5V



Parts for a kit



3199F

HD Monitor

- Pixel :1024×600
- Power Supply: DC 12V
- 10.1" LCD Monitor



1080P FULL HD

Wireless Keyboard

- It comes with a Wireless Keyboard and Receiver



Control box

- Built-in DVR
- SD Card (Max.64GB)
- Case Size:55×43.5×34.5 cm



HD Camera Head

- Head:Φ23mm (Φ14/Φ38)
- Self-leveling (Option)
- 512Hz sonde (Option)
- 9pcs Highlight White LEDS
- Pixel : 1920(H)x1080(V)



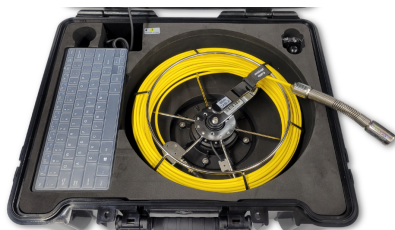
Camera Protector

- Diameter:Φ40mm
- Diameter:Φ80mm



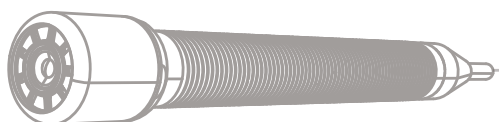
Cable Wheel

- Material : Fiberglass Cable
- Cable Length: 20/30/40M
- Cable Diameter: 5.2/4.8mm
- Meter counter



Battery Supply

- Battery Capacity: 7.2V 6400mAh
- Power Output: 6-12V DC, USB 5V



Parts for a kit



TPL200

Locator Multi Frequency (512Hz/640Hz/33kHz)

This is a Locator featuring frequencies of 512Hz/640Hz/33kHz, specifically designed for locating buried pipes and cables. This tool aids in locating and tracing the paths of buried power cables, drains, ducts, pipes, sewer lines, and telephone cables. The locator can be used independently or in conjunction with a camera sonde or transmitter.

Please note: The Locator is not intended for use as a Metal Detector.

NEW



Distance:
10 meters (open area)



Frequencies:
512Hz/640Hz/33kHz



Power Line Locate:
50/60Hz



Radio Frequencies:
6KHz-22KHz



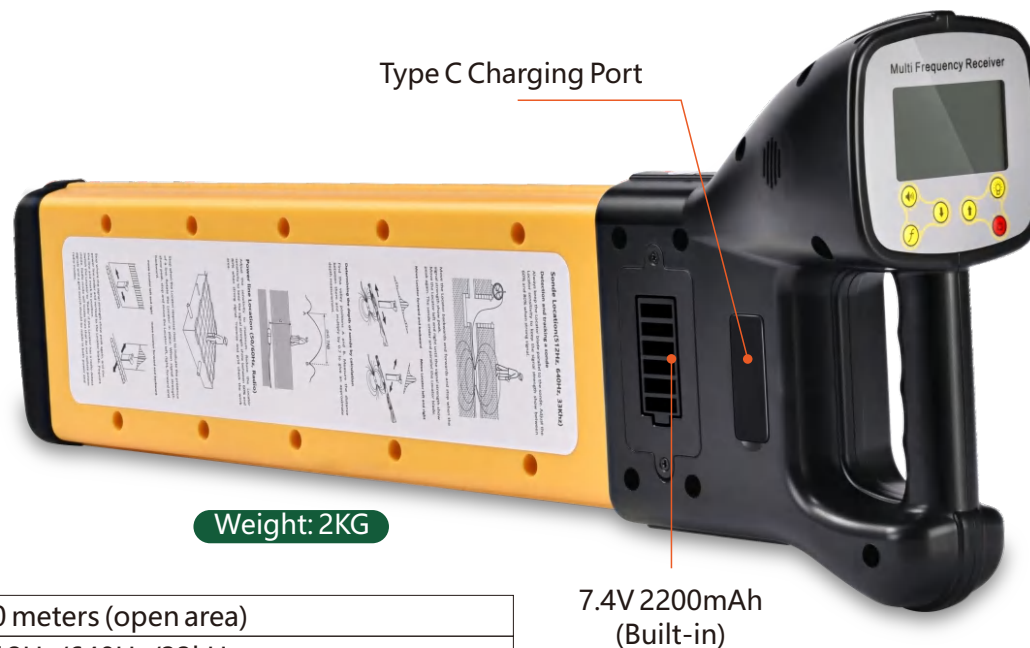
Signal Level:
0~100



Ingress Protection:
IP65



Working time:
10 hours



Specifications

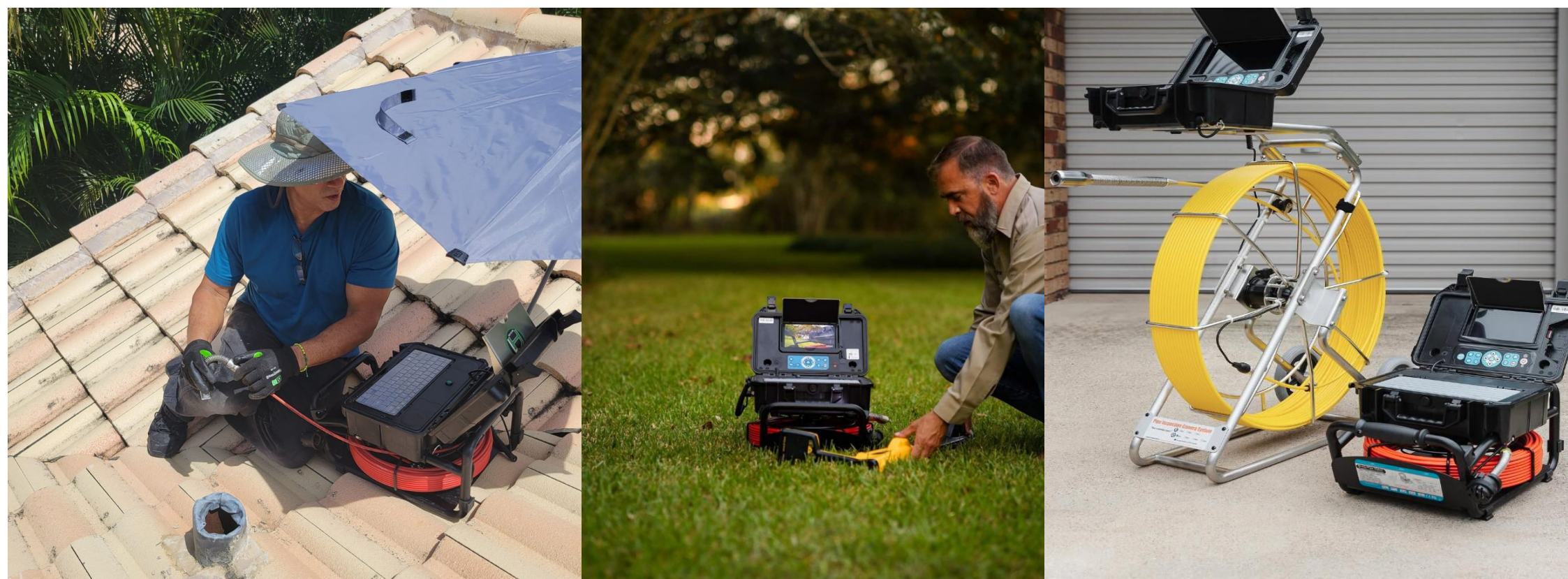
Receive Distance:	10 meters (open area)
Locate Frequencies:	512Hz/640Hz/33kHz
Power Line Locate:	50/60Hz Power Line
Radio Frequencies:	6KHz-22KHz
Percentage Signal Level:	on screen
Signal Level Output:	Speaker or headphone
Sensitivity Setting:	0~100
Speaker Level:	Adjustable
LCD Back Light:	Adjustable
Size:	690mm×240mm×110mm
Weight:	2KG
Ingress Protection:	IP65
Operating Temperature:	-10~50°C/+14~+122°F
Storage Temperature:	-20~60°C/+4~+140°F
Power Supply:	Lithium Battery 7.4V 2200mAh (Built-in)
Working Time:	10 hours
Charge Time:	3 hours
Charge Power Supply:	5V DC (USB-Type C Cable)

7.4V 2200mAh
(Built-in)

Parts for A Kit:

- ① Multi-Frequency Locator
- ② User Manual
- ③ TYPE-C to USB-A Charging Cable
- ④ 7.4V 2200mAh Li-Ion Battery (Built-in)





The toughest tools down the line



ETVCameras CO.,LTD

1F, Yifutong Industrial Zone, Huangmabu Community, Lezhujiao Village,
Hangcheng Street, Bao'an District, Shenzhen, China

For more product information, please visit our website:

WWW.EtvCameras.com

Tel: +86 13267135215

sales@etvcameras.com

